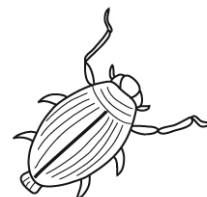


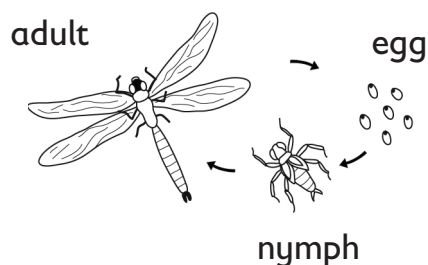
Minibeasts are very small animals. You can find them outside in a garden, a park, a wood or a pond. There are many different kinds of minibeasts.

Insects

Insects all have six legs. Many insects live in ponds. Water boatmen, whirligig beetles and pond skaters are all insects that live in ponds. Some flying insects, like dragonflies, live in ponds when they are larvae.



Life cycle of a pond insect



Frogs and toads

Frogs and toads are minibeasts. Frogs live in ponds. Toads don't live in ponds, but they need to live near ponds to lay their eggs. Frogs and toads both lay their eggs in a sticky jelly in ponds. Tadpoles hatch from the eggs. They grow into frogs or toads.



Pond snails

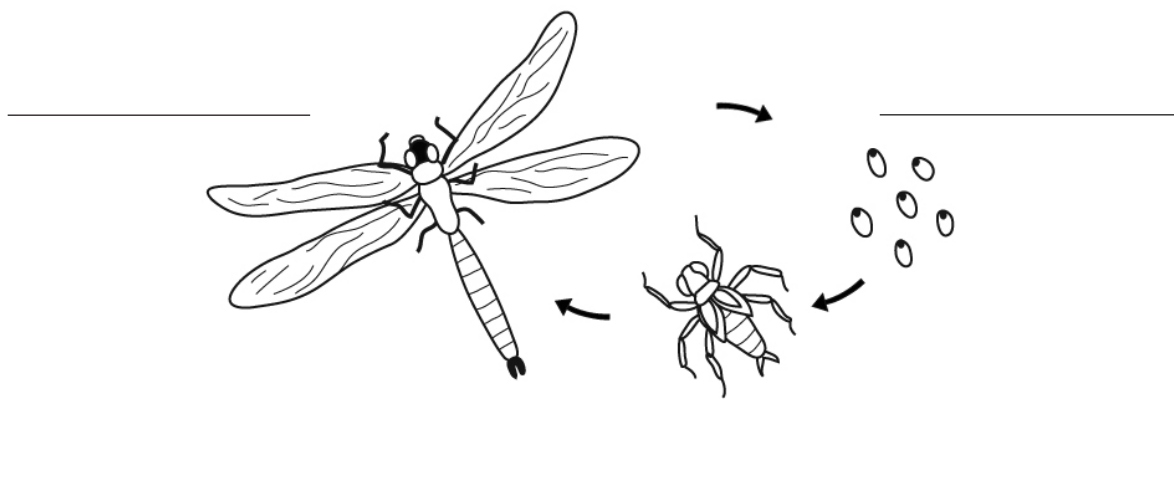
Some snails live in rivers and ponds. Like land snails, pond snails have hard shells that protect them. They can pull their soft bodies inside their shells if they think danger is near. Pond snails eat tiny plants, called algae, as well as dead plants. They help to keep ponds clean and fresh.



You **must** have an adult with you if you go near a pond to look for minibeasts. If you catch a minibeast, you should always let it go again.

1. Write the names of three insects that live in ponds.

2. Label these pictures to show how a pond insect grows.



3. Circle the frog.



4. What hatches from a toad's egg?

5. What does a pond snail do if it thinks danger is near?



6. Why do people like to have pond snails in their ponds?

Practice text: Minibeasts in the Pond

Cracking the questions

Children should be able to complete the tasks with some independence.

Question	Answer	Focus	Strategy
1. Write the names of three insects that live in ponds.	Water boatmen, Whirligig beetles, Pond skaters	1b	Where will you look for the answer to this question? Use the headings. Remember the question while you read until you see insect names. Even if you know other insects, if there are answers in the text you should use them.
2. Label these pictures to show how a pond insect grows.	egg, nymph, adult (correctly labelled)	1b	In texts like this, the information may be in diagrams as well as in the main text. Match the diagrams in the question with the one in the text. Add the missing labels.
3. Circle the frog.	Frog (in pond) circled.	1c	Where will you look for the answer to this question? Use the headings. Remember the question while you read just the most useful part of the text. In this question, you have to make use of information from the text.
4. What hatches from a toad's egg?	A tadpole.	1b	Where will you look for the answer to this question? Use the headings. Remember the question while you read just the most useful part of the text. Read until you see what hatches.
5. What does a pond snail do if it thinks danger is near?	It pulls its body inside its shell.	1b	Where will you look for the answer to this question? Use the headings. Remember the question while you read just the most useful part of the text. Read until you find the answer.
6. Why do people like to have pond snails in their ponds?	They help to keep ponds clean.	1b	Where will you look for the answer to this question? Use the headings. Remember the question while you read just the most useful part of the text. Read until you find the answer.