

Seas and Coasts

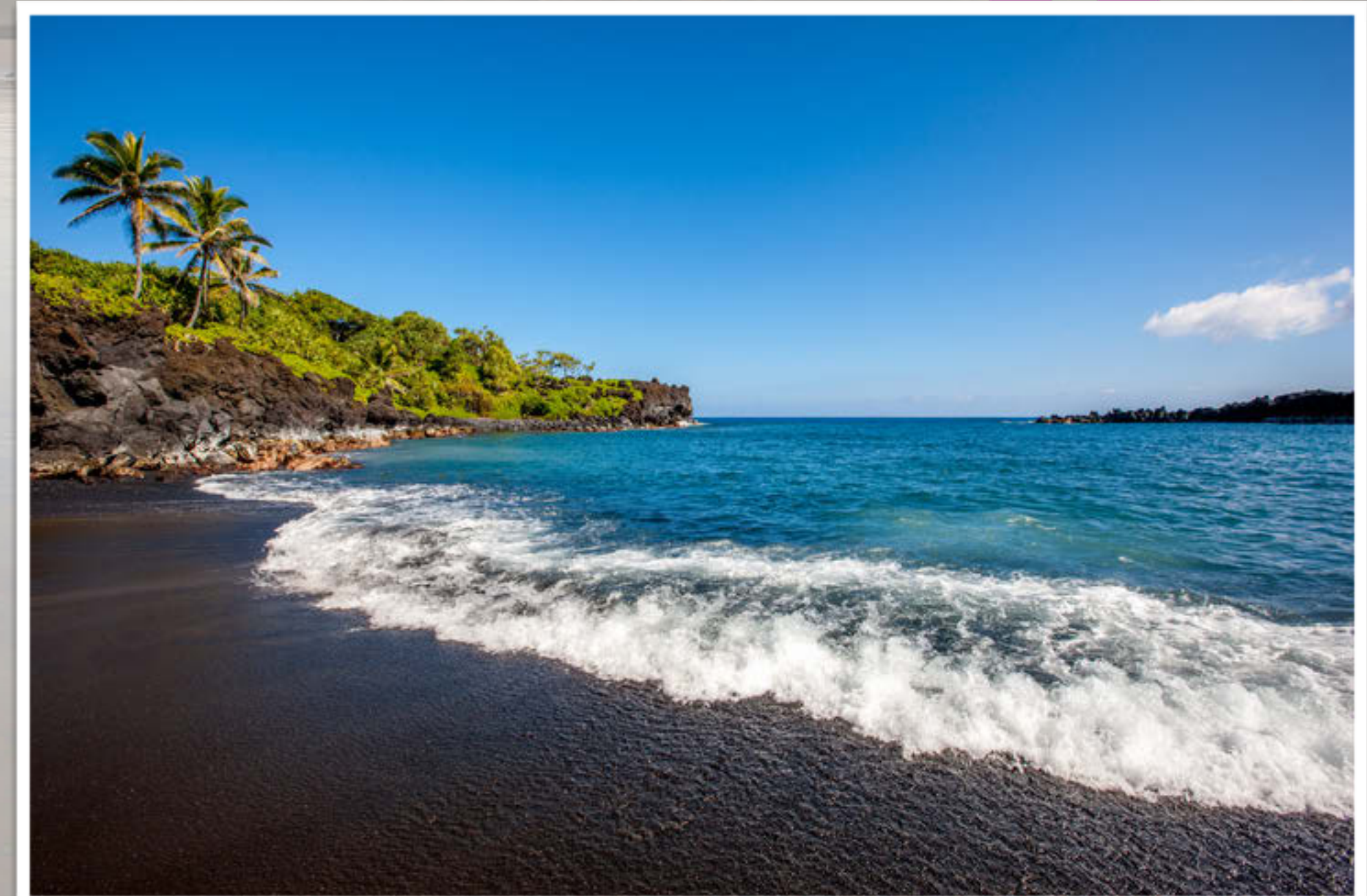
Today we will be...

Comparing a British beach with one from another country.

Next



Click on a beach then
write down all the
questions could you ask
about it.



Back

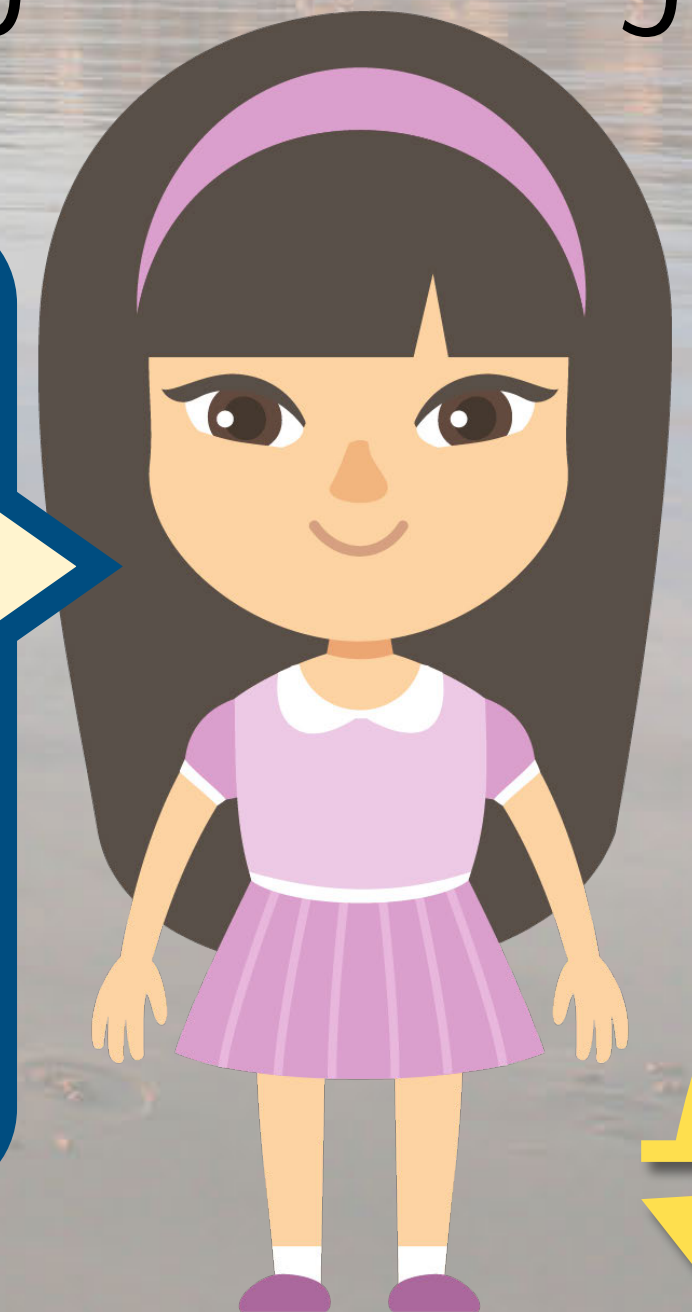




This is Cathedral Cove. It is in the north of New Zealand. People can only get to it by walking along a coastal path or arriving by boat. The rock is called Te Hoho Rock. The beach is sandy. There are lots of fish in the water that can be seen by snorkelers. The arch was made by the sea eroding the rock. Eroding means slowly rub away.



Have all your questions been answered?
How could you answer the rest of your questions?



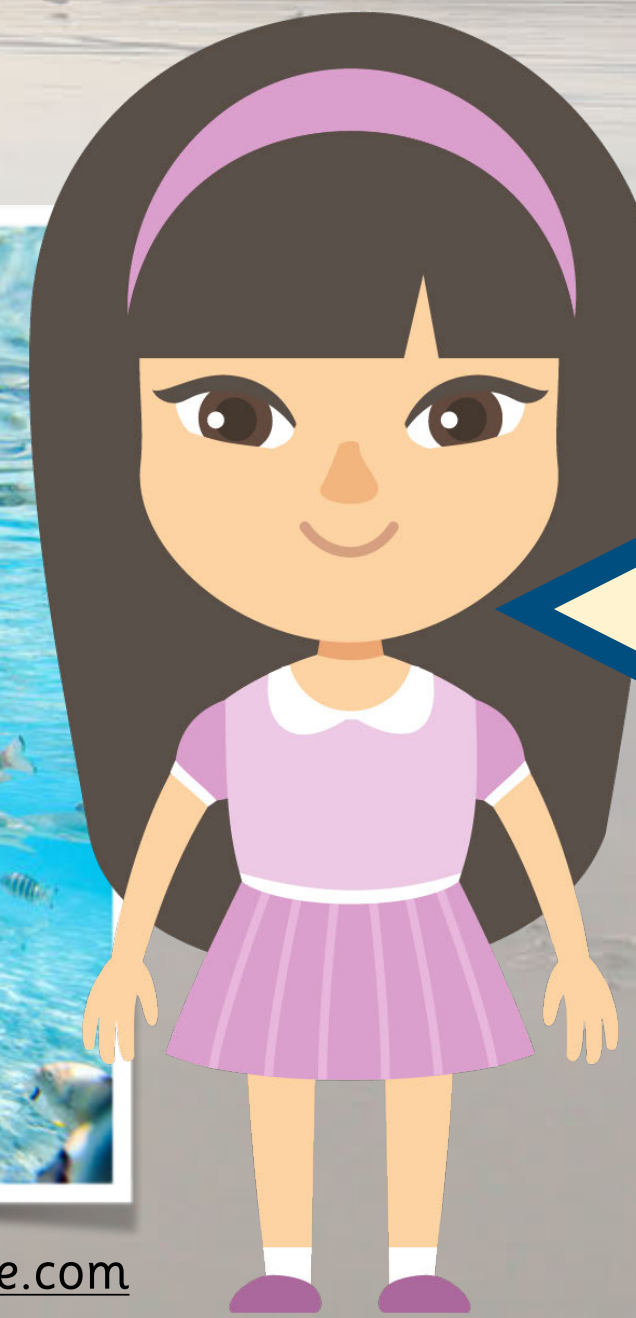
Next

Back





This is Bora Bora. It is an island in the middle of the Pacific Ocean. People can only get to it by flying and then getting a boat. The island has sandy beaches. Water bungalows are a popular place for tourists to stay. There are lots of fish in the water that can be seen by snorkelers or from the bungalows.



Have all your questions been answered?
How could you answer the rest of your questions?

Back

Next

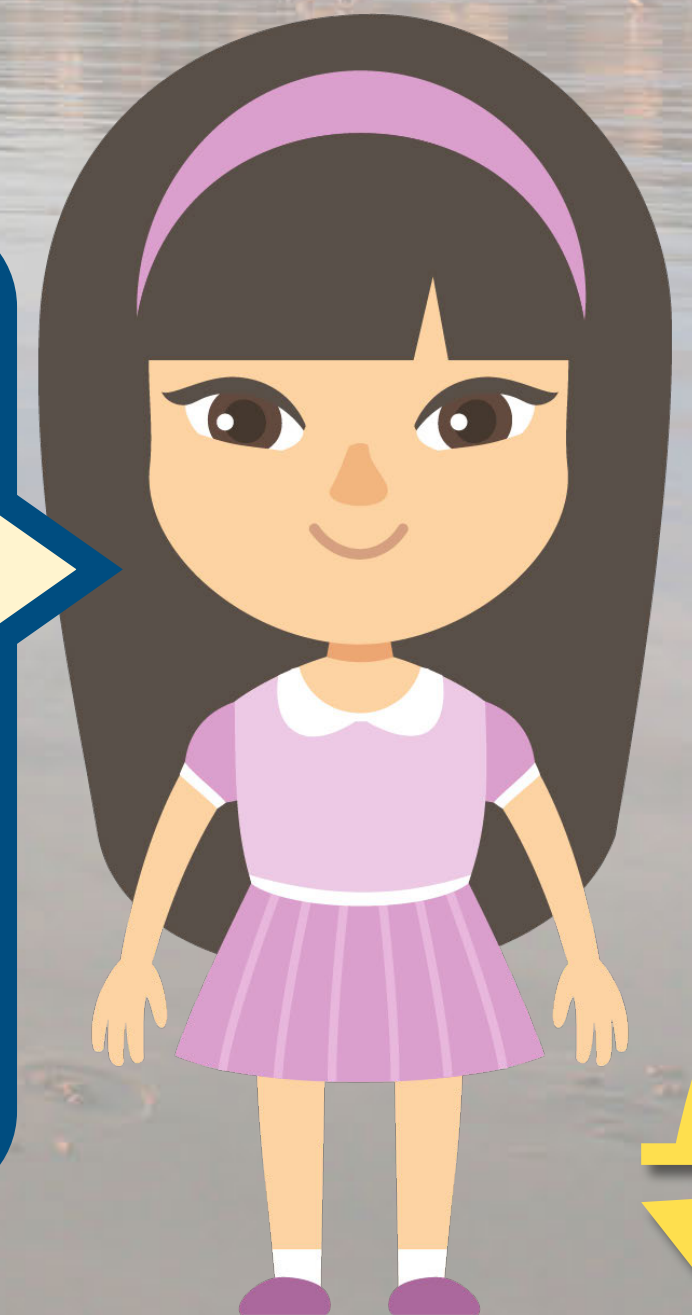




This is Hawaii. It is an island in the middle of the Pacific Ocean. People can only get to it by flying. The island has sandy beaches. Some of the beaches have black sand. They are black because they were made from lava. Turtles use the beach to lay their eggs and sunbathe.



Have all your questions
been answered?
How could you answer the
rest of your questions?



Back

Next

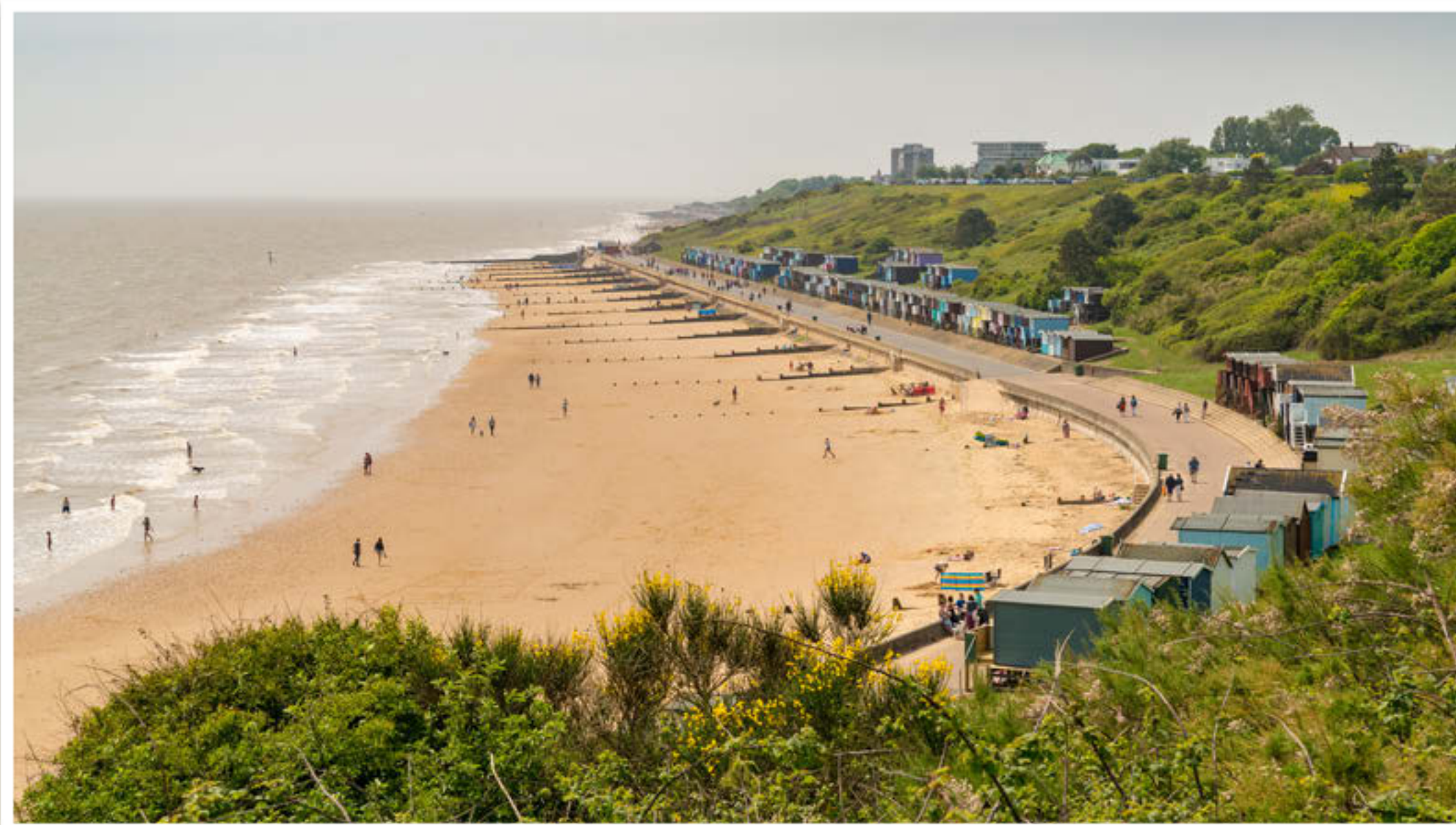


Pick a beach then write down all the questions could you ask about it.



Back





This is Walton-on-the-Naze. It is in Essex which is in the south east of England. People can get to it by train, car or bus. Tourists come to the beach to find fossils. People have found bird fossils, turtle fossils and sharks teeth here. Sea holly is also a popular thing to collect. The beach is sandy and lined with beach huts. There is a pier to visit.

Have all your questions been answered?
How could you answer the rest of your questions?



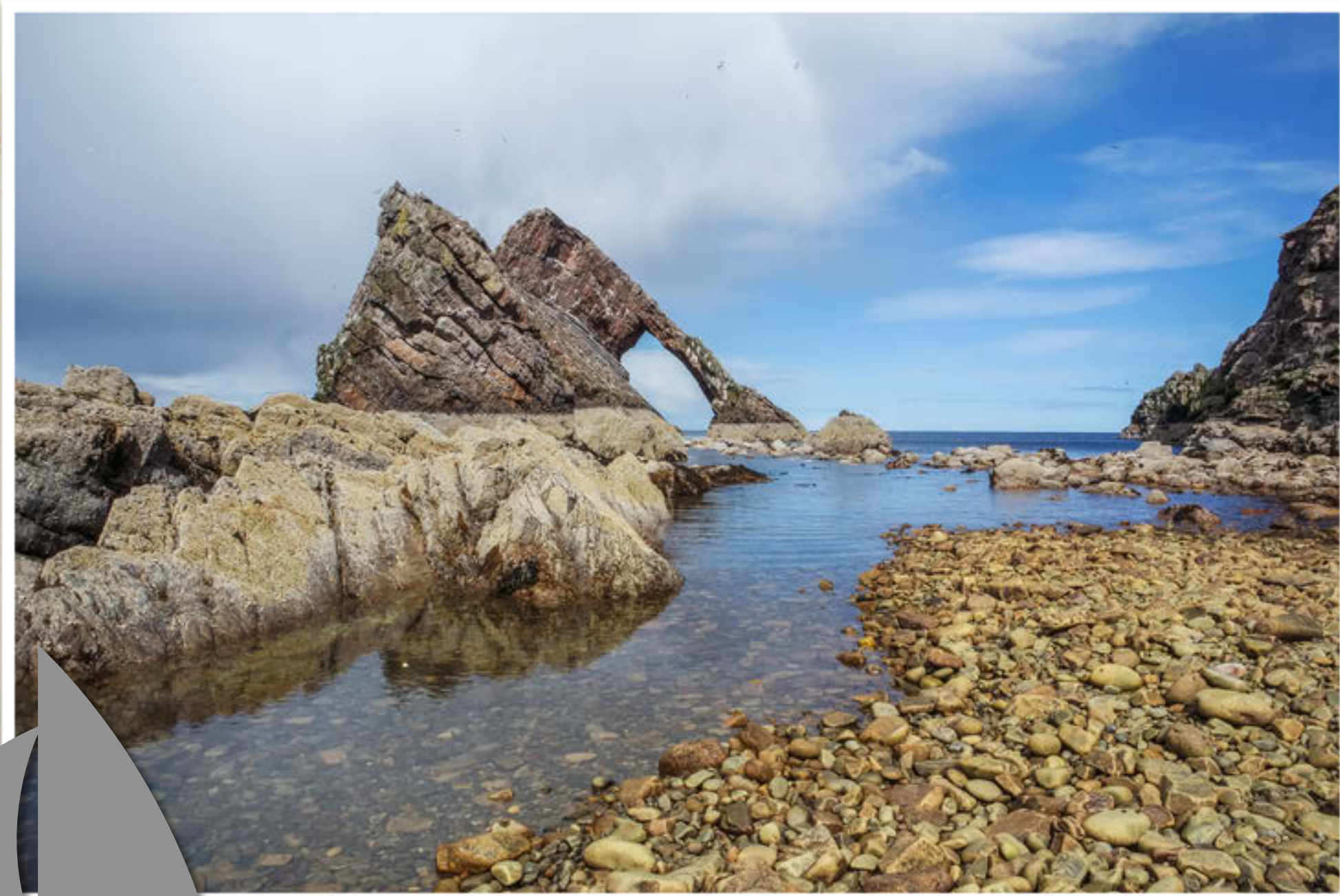
Next

Back





This is Bow Fiddle Rock. It is in Moray in the north east of Scotland. People can travel to it by car or bus. It is a natural sea arch made from quartz sandstone. The sea and the weather eroded the rock leaving the hole. Eroding means slowly rub away. Birds rest and make their nests on the rock.



Have all your questions been answered?
How could you answer the rest of your questions?



Next

Back





This is Dawlish. It is in Devon in the south west of England. People can travel to it by car or train. The train track goes along the coast. The waves sometimes crash onto the train track. People fish in the sea. The beach is sandy, with some pebbles. Black swans can be spotted in the river that goes through Dawlish and into the sea. The swans came from Western Australia.

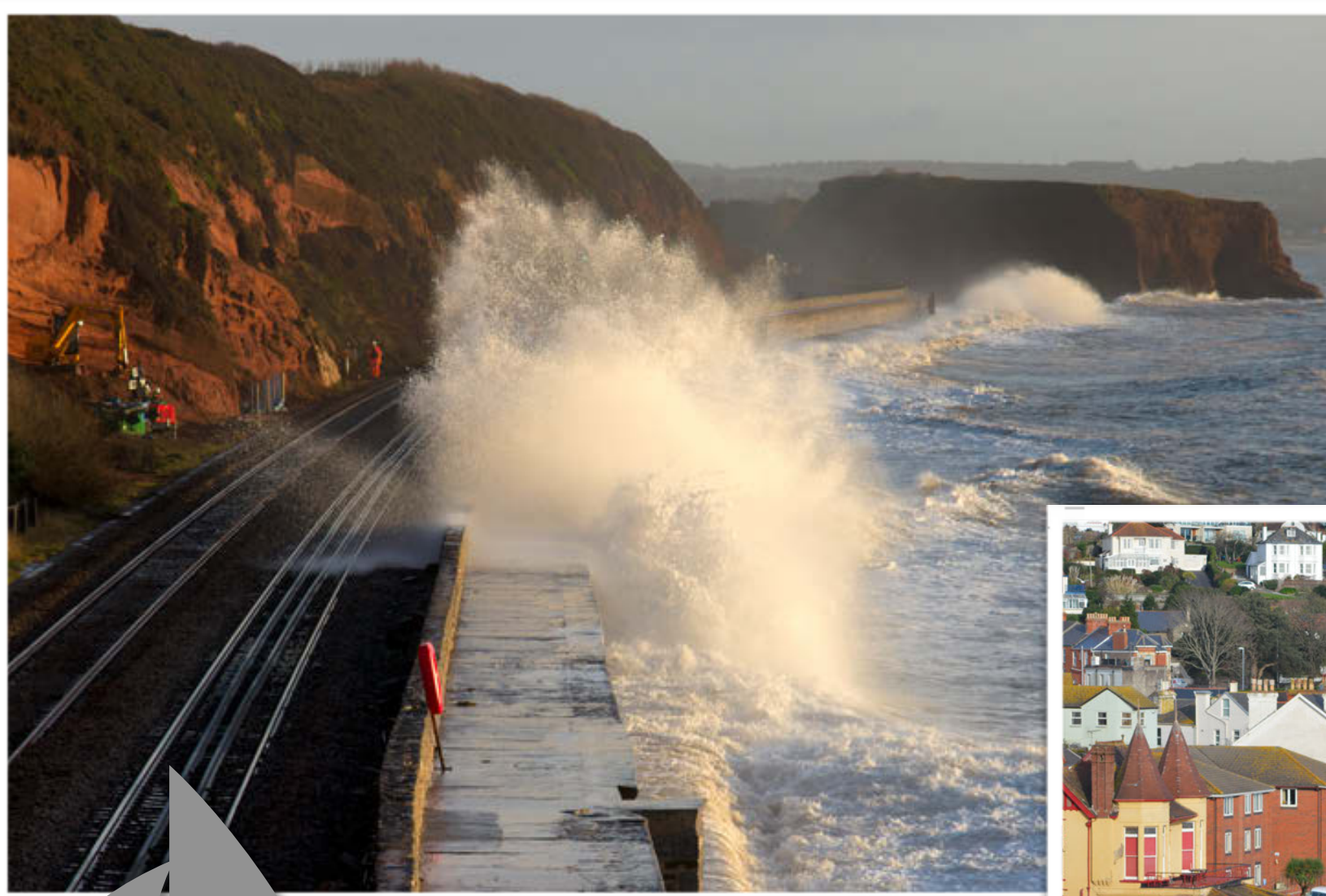


Photo attribution: Wiki commons Farzeymedic

www.planbee.com



Have all your questions been answered?
How could you answer the rest of your questions?

Back

Next

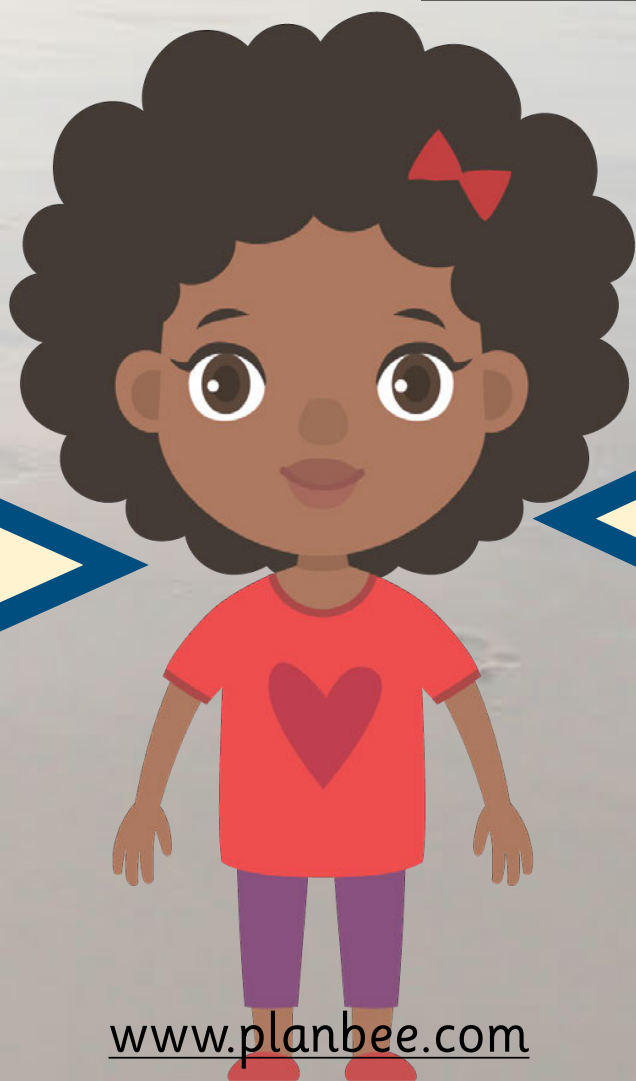


Hawaii. An island in the middle of the Pacific Ocean

Walton-on-the-Naze. A beach in Essex, the south east of England

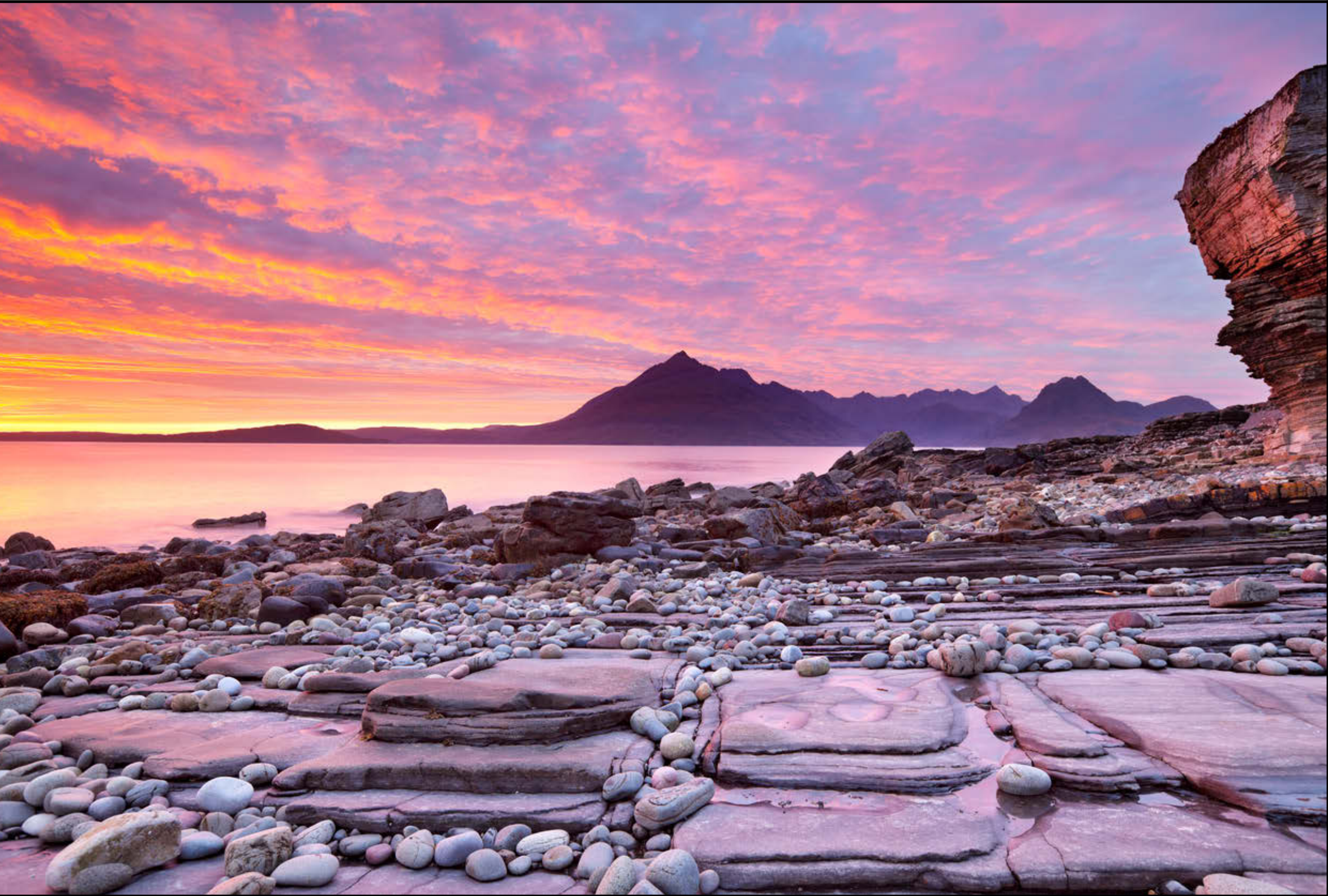
What is the same and what is different about these two beaches?

Which natural features and which human features can you see?



Back

Next



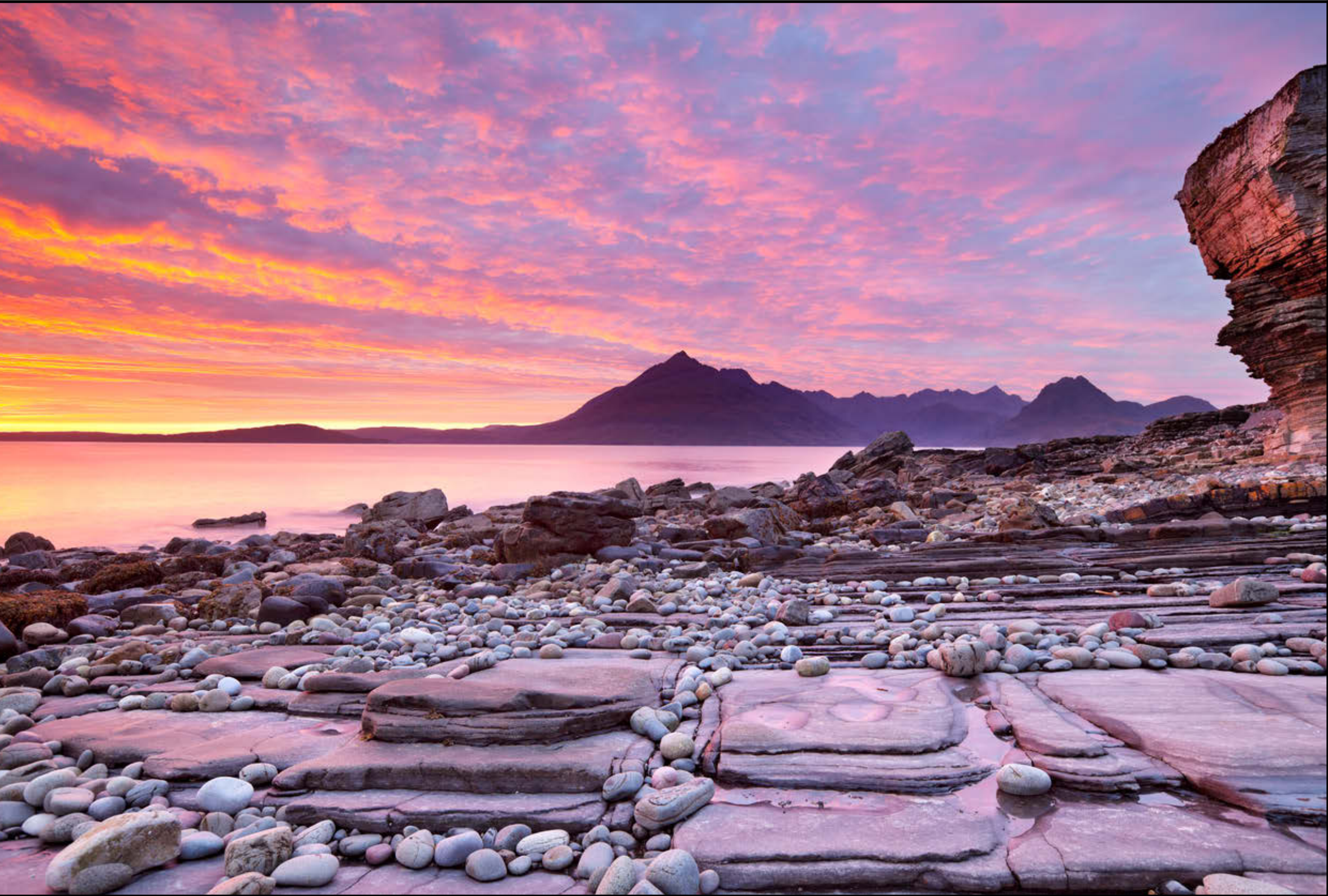
Elgol beach, Isle of Skye, Scotland



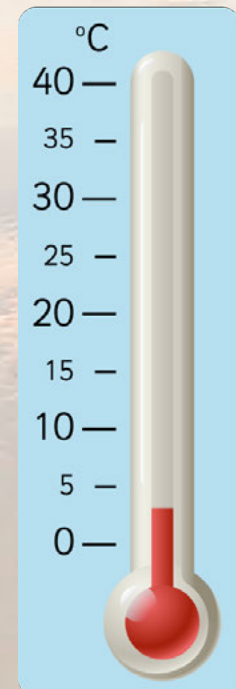
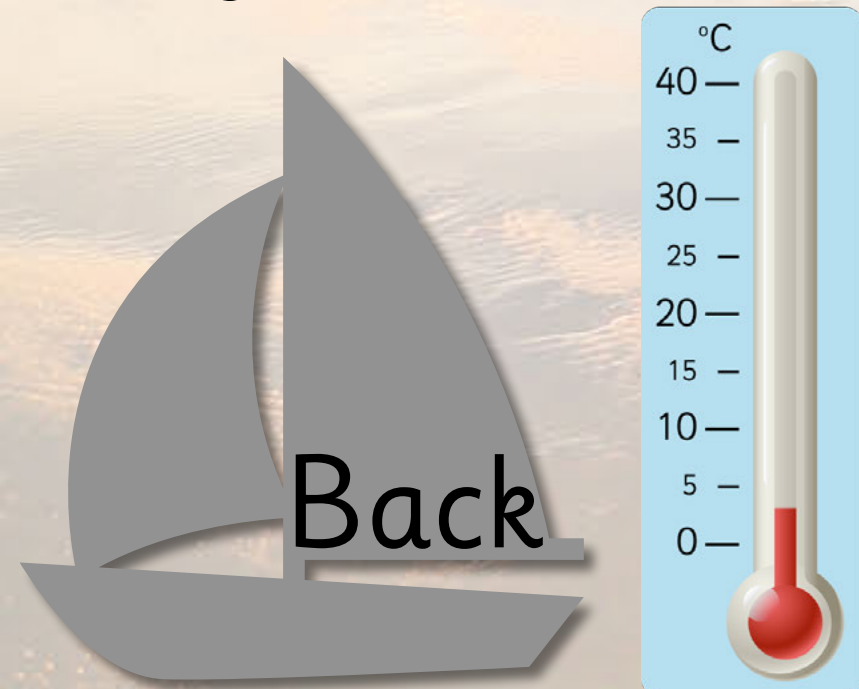
Croatian island, Adriatic Sea

Which beach would you rather visit? Why?

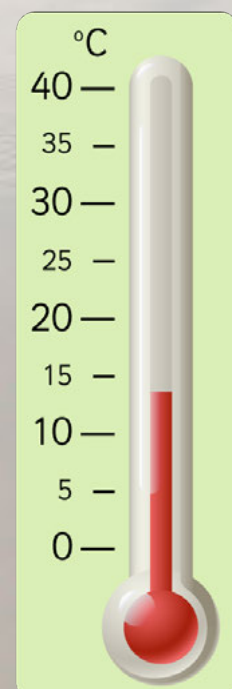




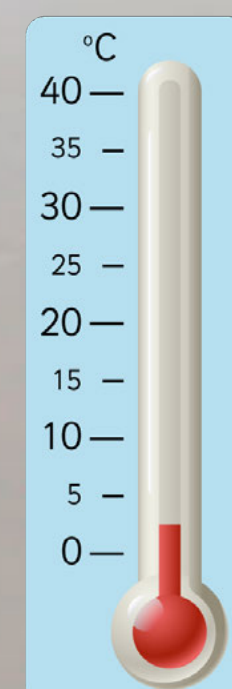
Elgol beach, Isle of Skye, Scotland



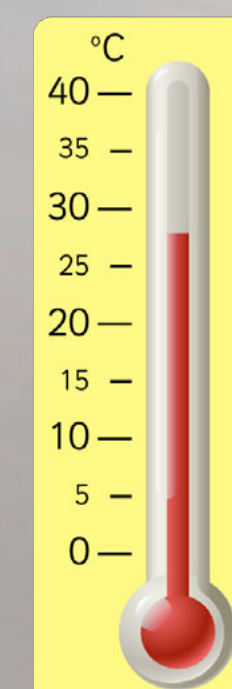
The temperature here is normally between 4°C and 14°C.



Croatian island, Adriatic Sea



The temperature here is normally between 3°C and 28°C.





Seilebost beach, Isle of Taransay, Scotland



Hong Island, Krabi, Thailand

Which beach would you rather visit? Why?



Back

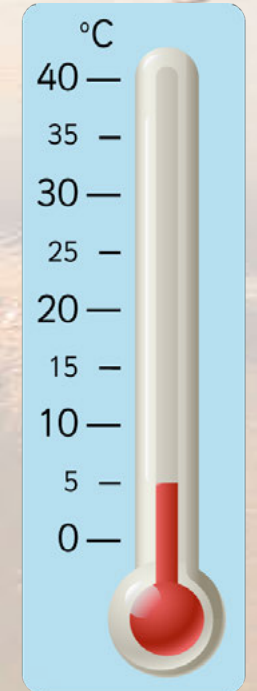


Next

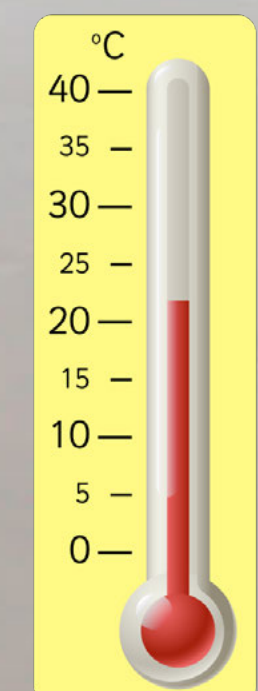
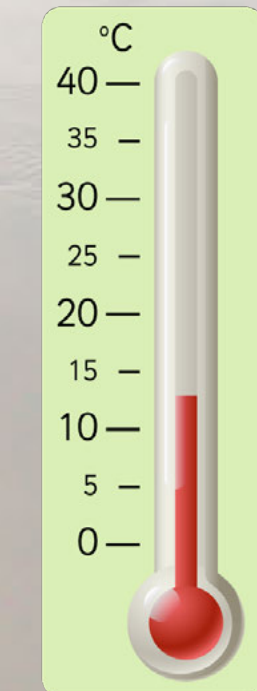


Seilebost beach, Isle of Taransay, Scotland

Hong Island, Krabi, Thailand



The temperature here is normally between 5°C and 13°C.



The temperature here is normally between 22°C and 34°C.

