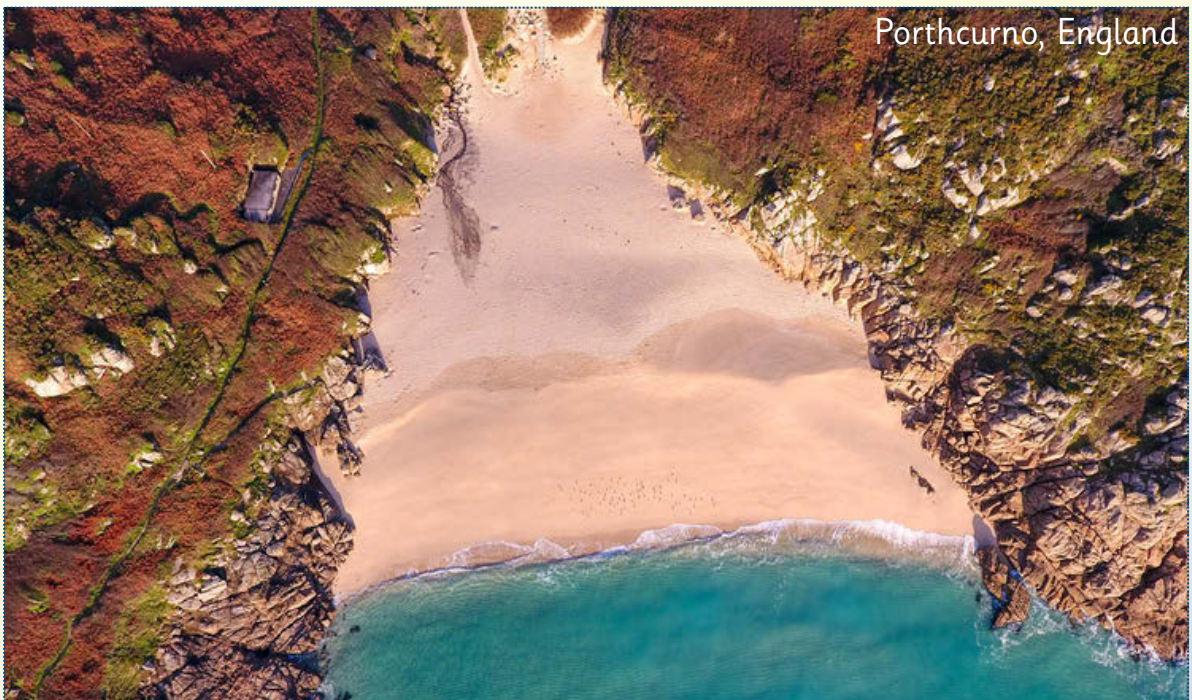


Porto de Galinhas, Brazil

Porto de Galinhas is in the west of Brazil. It is a sandy beach bordered by houses and shops.



Porthcurno, England

Porthcurno is in Cornwall in England. It is in the south west of England. It is a sandy beach surrounded by rocky cliffs.



Navagio Beach, Greece



Navagio Beach is on the island of Zakynthos in Greece. It is to the east of Greece. It is a sandy beach surrounded by steep rocky cliffs. There is a shipwreck on it.

Gower, Wales

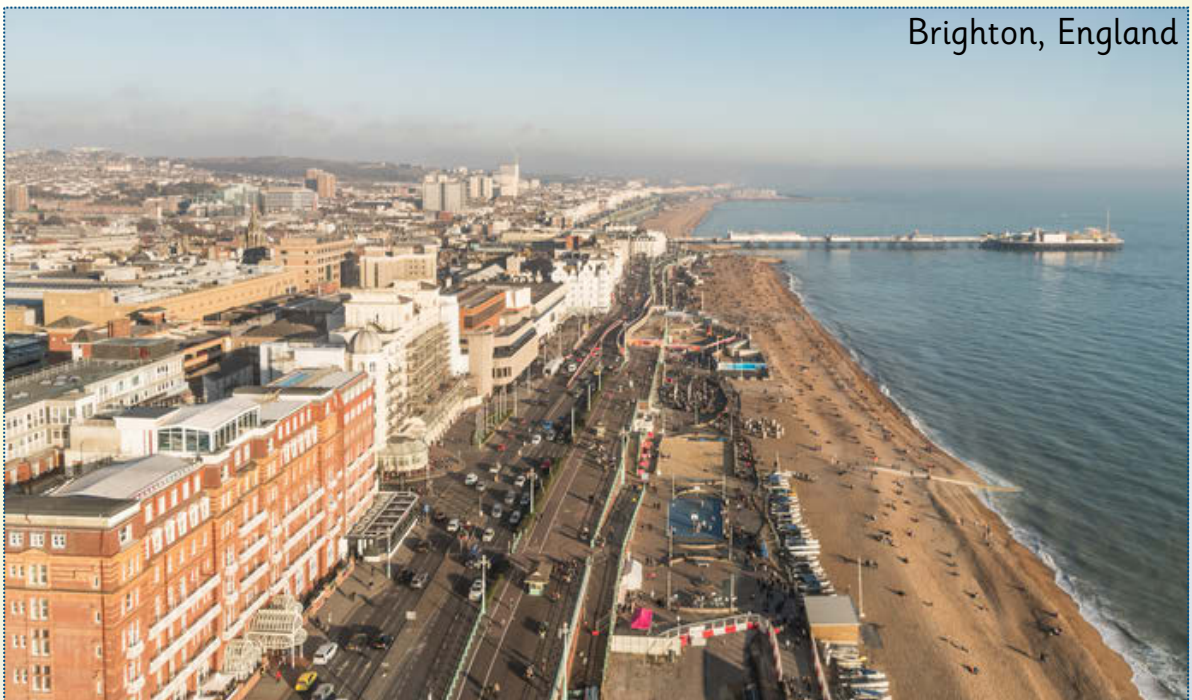


The Gower Peninsula is in Glamorgan, near Swansea in Wales. It is in the south of Wales. It is a sandy beach surrounded by rocky cliffs with caves.





Miami Beach is in Florida in the USA. It is in the south east of the USA. It is a sandy beach with cafes, shops and sports facilities.



Brighton Beach is in East Sussex in the south of England. It is a pebble beach with lots of cafes and shops. There is a pier and a fun fair.



Calella Beach, Spain



Calella Beach is near Barcelona in Spain. It is in the north east of Spain. It is a sandy beach with cafes and sports facilities. A train track runs between the beach and the town.

Dawlish, England



Dorlish Beach is in Devon in England. It is in the south west of England. It is a sandy beach with pebbles and space for fishing. A train track runs between the beach and the town.

Name: \_\_\_\_\_

Date: \_\_\_\_\_

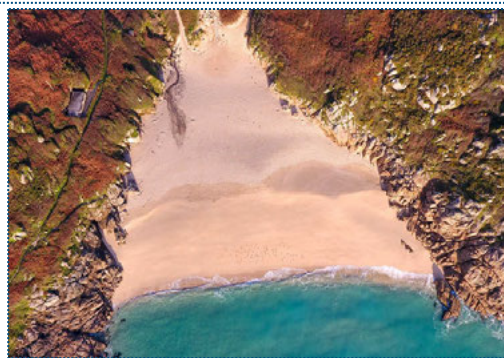


Let's compare the beach in Brazil with the UK beach!

Circle the **physical** and **human** features you can see.


Porto de Galinhas, Brazil

mountains	sand	lake
sea	rocks	hill
buildings	port	swimming pools
footpaths	road	factory



Porthcurno, England

mountains	sand	lake
sea	rocks	hill
buildings	port	swimming pools
footpaths	road	factory

What is the same in both pictures?

What is different in both pictures?

Which would you rather visit? Why?

Name: \_\_\_\_\_

Date: \_\_\_\_\_



Let's compare the beach in Greece with the UK beach!

Circle the **physical** and **human** features you can see. Then add some of your own.



Navagio Beach, Greece

mountains	sand	lake
sea	rocks	hill
buildings	port	swimming pools
footpaths	road	factory



Gower, Wales

mountains	sand	lake
sea	rocks	hill
buildings	port	swimming pools
footpaths	road	factory

What is the same in both pictures?

.....

.....

.....

What is different in both pictures?

.....

.....

.....

How are the cliffs in the pictures different?

.....

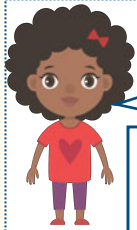
.....

.....



Name: \_\_\_\_\_

Date: \_\_\_\_\_



Let's compare your beaches! Write the two beaches are you comparing below.

\_\_\_\_\_

Which human features are the same in the pictures?

\_\_\_\_\_

\_\_\_\_\_

\_\_\_\_\_

Which human features are different in the pictures?

\_\_\_\_\_

\_\_\_\_\_

\_\_\_\_\_

What is there for tourists to do in each place?

\_\_\_\_\_

\_\_\_\_\_

\_\_\_\_\_

Which physical features are the same in the pictures?

\_\_\_\_\_

\_\_\_\_\_

\_\_\_\_\_

Which physical features are different in the pictures?

\_\_\_\_\_

\_\_\_\_\_

\_\_\_\_\_

Are the beaches easy to get to?

\_\_\_\_\_

\_\_\_\_\_

\_\_\_\_\_



This beach is in Florida in the south east of the USA. It is on the Atlantic Ocean.



This beach is sandy. It is next to footpaths and green spaces.



Miami is popular with tourists. British tourists fly here from the UK.



The water at this beach is normally warm. It is between 22°C and 30°C.



There is lots to do at this beach. There are hotels, cafes and shops. There are lots of green spaces.



There is lots to do in the sea. People surf, sail and swim in the sea.



This beach is in East Sussex in the south of England. It is on the Atlantic Ocean.



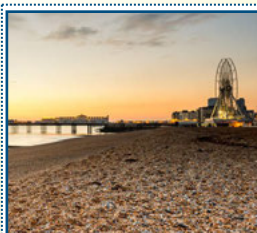
This beach is pebbly. It is next to roads and buildings.



Brighton is popular with tourists. Most British tourists get here by train or driving.



The water at this beach is normally cold. It is between 7°C and 18°C.



There is lots to do at this beach. There are hotels, cafes, shops, a funfair and a pier.



There is lots to do in the sea. People sail, kayak, swim and fish in the sea.





This beach is in Calella in the north east of Spain.



This beach is sandy. It is next to a train track, footpaths and trees.



Calella is popular with tourists. British tourists fly here from the UK.



The water at this beach is normally cool. It is between 13°C and 25°C.



There is lots to do at this beach. There are hotels, cafes and shops. It is a big beach.



There is lots to do in the sea. People sail, waterski, kayak, snorkel and swim in the sea.



This beach is in Devon in the south west of England. It is on the Atlantic Ocean.



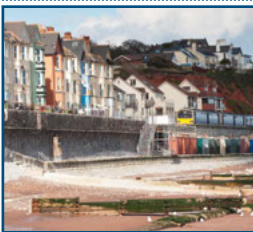
This beach is sandy with pebbles. It is next to a train track, a road and buildings.



Dawlish is popular with tourists. Most British tourists get here by train or driving.



The water at this beach is normally cold. It is between 8°C and 16°C.



There are a few things to do at this beach. There are a few hotels, cafes and shops.



There are a few things to do in the sea. People sail and fish in the sea.



Use this sheet to check you sorted the beaches correctly.  
These beaches are **not** in the UK.



New Zealand



Bora Bora



Hawaii



Norway



Cyprus



Australia



Tenerife



Italy





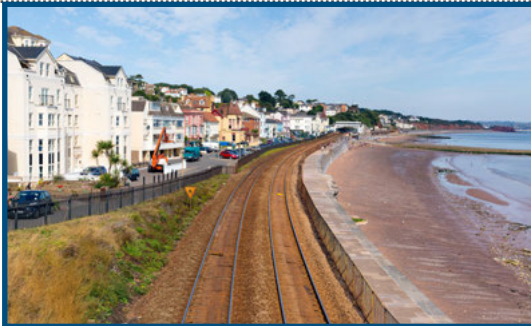
Use this sheet to check you sorted the beaches correctly.  
These beaches **are** in the UK.



Essex, England



Moray, Scotland



Devon, England



Kent, England



East Sussex, England



Dorset, England



Snowdonia, Wales



Causeway Coastline, Northern Ireland





























































