

Henri Rousseau

Today we will be...

Exploring the features of Henri Rousseau's paintings.



Back



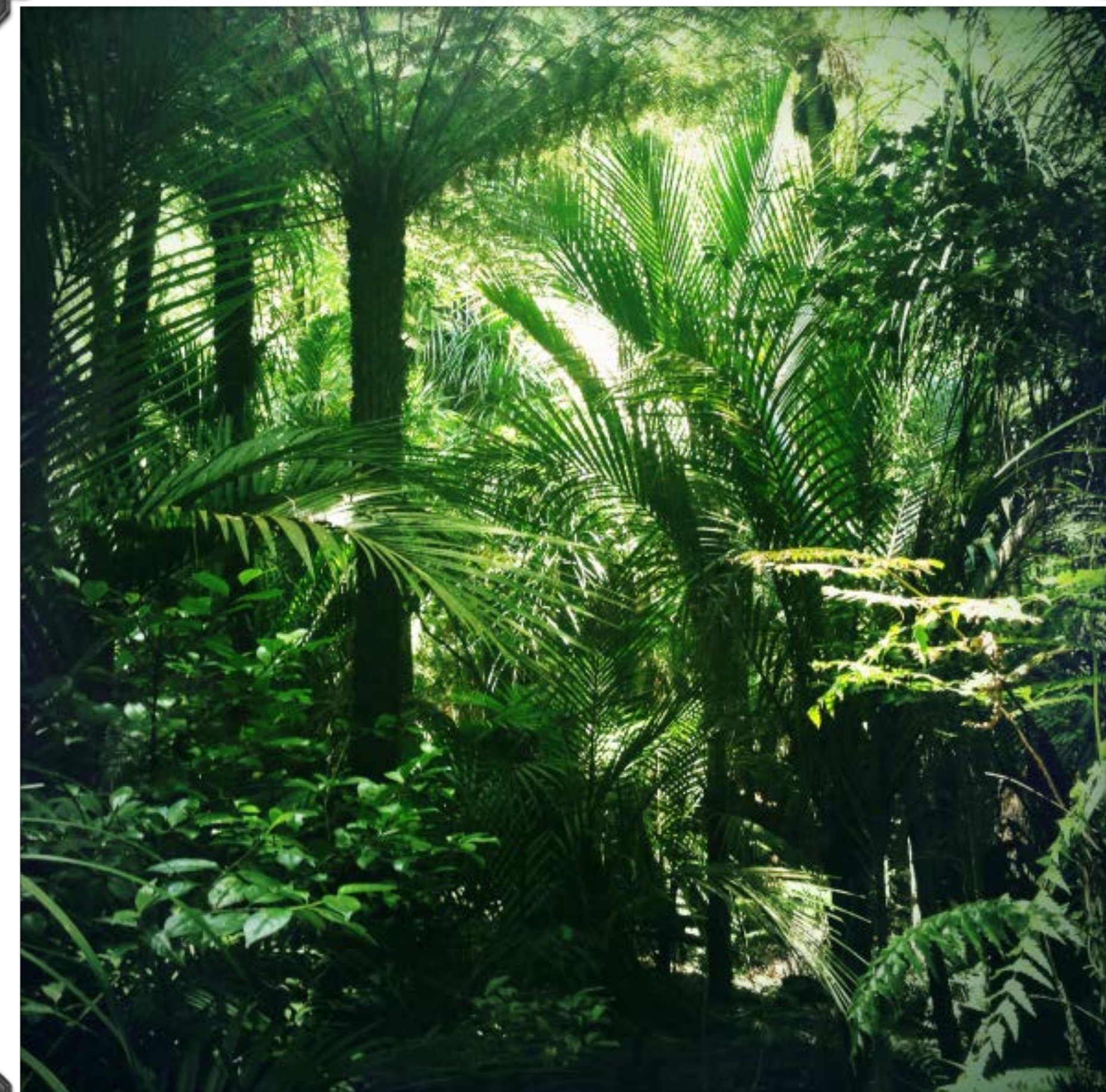
Next



Look carefully at these two pictures.

What differences do you notice?

Can you see any similarities?



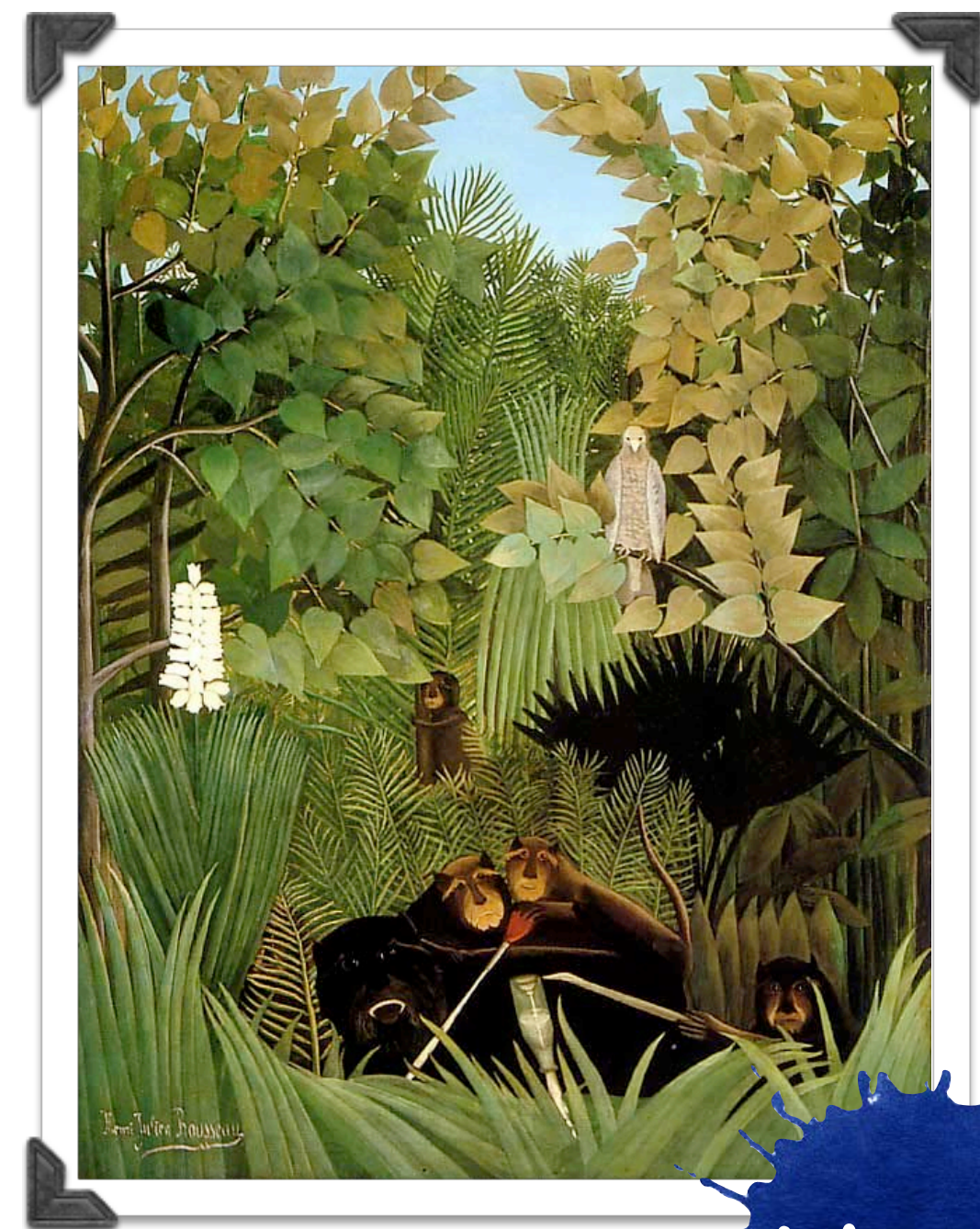
Back

Next

Can you write down the differences and similarities you spotted in the two pictures?



Think, pair and share your ideas.



Back

Next

What inspired Rousseau?

Rousseau did not have any formal training as he taught himself.

He spent most of his time painting and drawing in the botanical gardens in Paris.

He was really inspired by the colours and shapes of the flowers and plant life.

He also listened to the stories of the soldiers he met who had travelled to subtropical countries.



What colours and shapes can you see in the photographs?

Back

Next

The style of Rousseau.

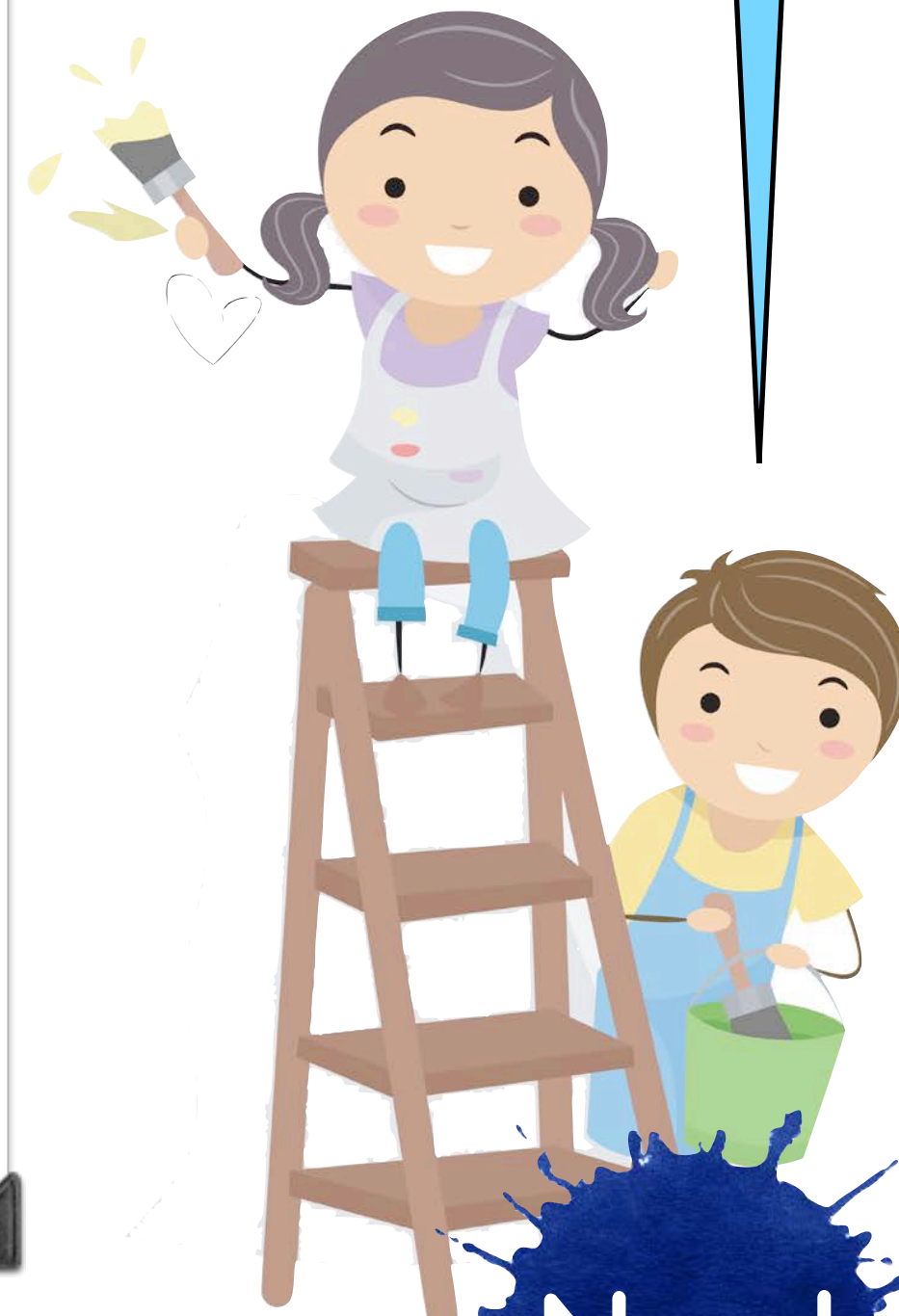
Rousseau had a very strong style which can clearly be found in his work.

Key Features

- Pure simple colours in different shades.
- Clear outlines
- Lush green plants in the background
- Huge over-sized flowers
- Animals in foreground
- Each piece painted separately



Can you spot these features in Rousseau's painting?



Back

Next



Look carefully at the painting above. Can you find different examples of the key features found in Rousseau's paintings?

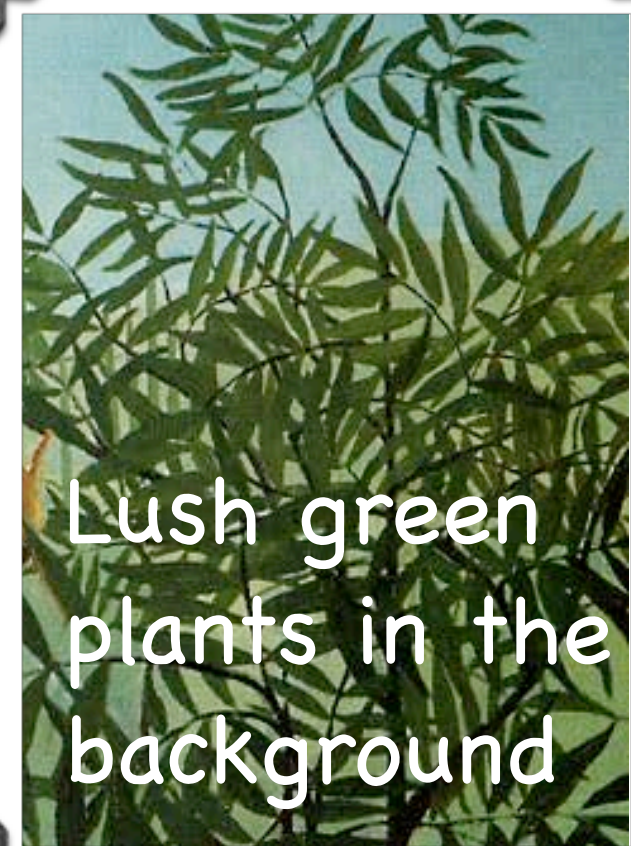
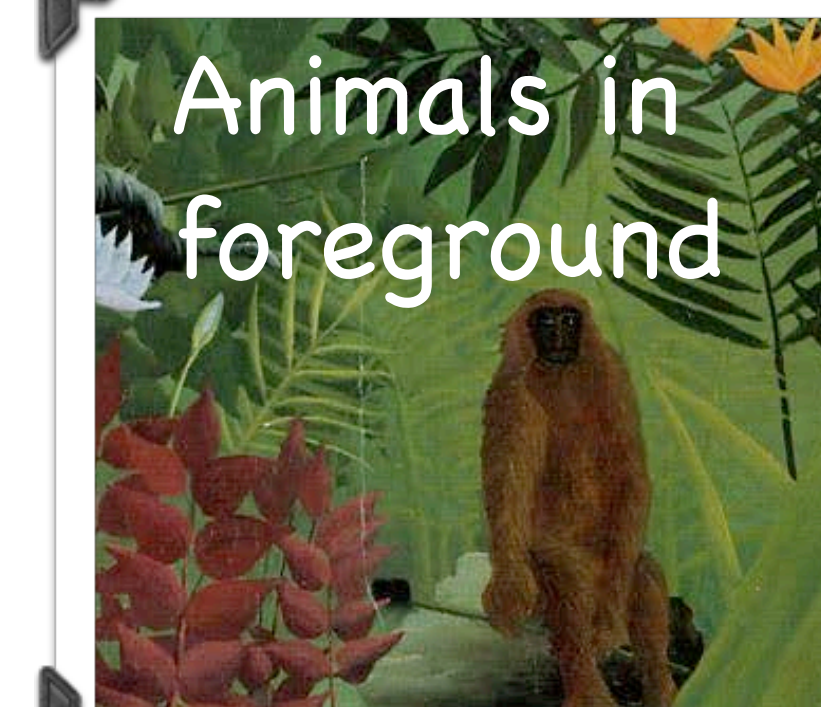
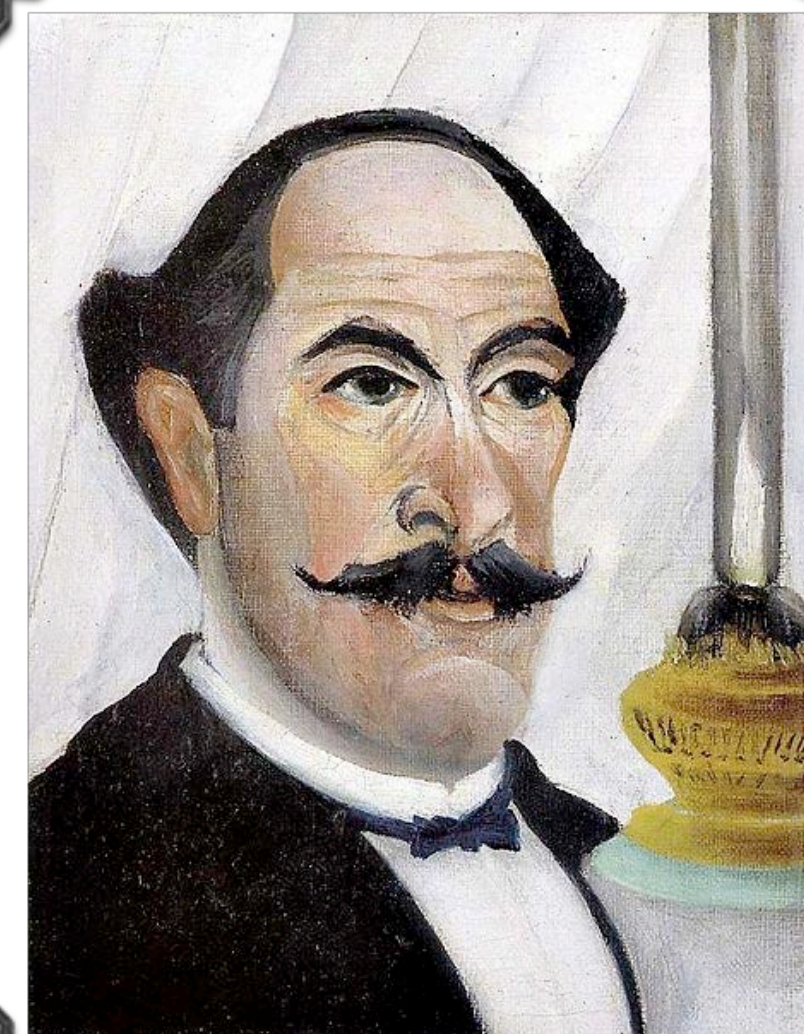
Back



Think, pair and share your ideas

Next

Henri Rousseau: Key Features



Don't forget to use these key features!

Back

Next