



Trinity St. Peter's

Church of England Primary School

where children shine

## **Infection Control Policy**

# **Infection Control Policy**

## **Policy Statement**

This policy is designed to work in conduction with the school ***Business Continuity Plan*** for dealing with outbreaks of an infection, epidemic or pandemic.

## **The Aims of the Policy**

The aim of this policy is to advise staff about the precautions needed when dealing with an infectious outbreak.

Human infections/epidemics/pandemics may have significate implications for the school, so this policy also considers the guidance from the World Health Organisation, Government, Department of Education (DfE), Public Health England (PHE), Local Educational Authority and Compliance Education.

## **Terminology**

### **Infection**

The invasion and multiplication of microorganisms such as bacteria, virus and parasites that are not normally present within the body. An infection may cause no symptoms and be subclinical or it may cause symptoms and be clinically apparent. An infection may remain localized, or it may spread through the blood or lymphatic vessels to become systemic (body wide). Microorganisms that live naturally in the body are not considered infections. For example, bacteria that normally live within the mouth and intestine are not infections.

### **Epidemic v Pandemic**

An infection or disease can be declared an epidemic when it spreads over a wide area and many individuals are taken ill at the same time. If the spread escalates further, an epidemic can become a pandemic, which affects an even wider geographical area and a significant portion of the population becomes affected

## **Key Areas**

1. Suspected outbreak of an infection
2. Health and Safety
3. Communication
4. Continuity of Educational Provision
5. School Closure and Reopening

## **1. Suspected outbreak of an infection**

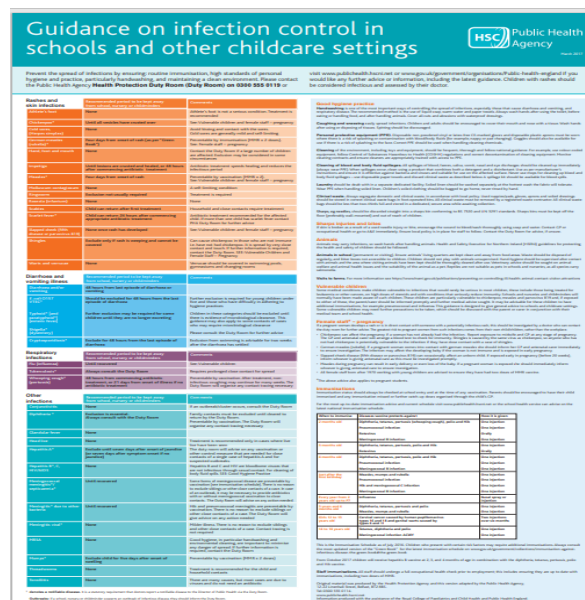
Trinity St. Peter's recognises that staff and pupils will suffer from various types of illnesses and infections. However, no-one knows exactly when the school will be faced with having to deal with a potentially contagious illness amongst its community. Therefore, we recognise the need to be prepared.

Infections are likely to spread particularly rapidly in schools and, as children may have no residual immunity, they could be amongst the groups worst affected.

We recognise that closing the school may be necessary in exceptional circumstances in order to control an infection. However, we will strive to remain open unless advised otherwise.

Good pastoral care includes promoting healthy living. School staff will give pupils positive messages about health and wellbeing through lessons and through conversations with pupils.

The Public Health England 'Guidance on Infection Control in schools and other childcare settings' poster will be consulted straight away as it lists all the common infectious illness/diseases and provides information on how to prevent the spread of infection.



### **When to notify or seek advice from The Health Protection Team (HPT)**

The Head Teacher will contact the local health protection team as soon as there is concern that a number of staff and/or pupils have fallen ill from the same infection or virus.

#### **Classification of an outbreak**

An outbreak or incident may be defined as:

- An incident in which 2 or more people experiencing a similar illness are linked in time or place.
- A greater than expected rate of infection compared with the usual background rate for the place and time where the outbreak has occurred.
- A member of staff or pupil has tested positive with a pandemic virus

#### **When to report**

The Head Teacher will contact the local health protection team as soon as they suspect an outbreak to discuss the situation and agree if any actions are needed. The information listed below will be made available before this discussion (where possible) as it will help to inform of the size and nature of the outbreak:

- Total numbers affected (staff and children)
- Symptoms
- Date(s) when symptoms started
- Number of classes affected

PHE	Telephone	Out of Hours
<p>PHE Cheshire and Merseyside Health Protection Team</p> <p>Suite 3B 3rd Floor Cunard Building, Water Street, Liverpool, L3 1DS</p>	<p>0344 225 0562 (option 1)</p>	<p>0151 434 4819 (ask for public health on-call)</p>

Contact details for the nearest Health Protection Team was sourced via:

<https://www.gov.uk/health-protection-team>

## **2. Health and Safety**

Any staff and pupil, who exhibits symptoms or suspect they may have an infectious illness, epidemic/pandemic virus should stay at home. The incubation period will be as per Public Health England's Guidelines.

Any staff or pupil, with a pre-existing health condition or anyone over the age of 65 is advised to shield at home until further information regarding the epidemic/pandemic is known.

Further information can be obtained from the NHS website or the respected medical advice website (British Heart Foundation, Asthma UK etc).

Pregnant staff are advised to consult with their own medical professional or mid-wife as some childhood illnesses (Chickenpox, German Measles, Slapped Cheek) etc can affect their unborn child.

### **Immunisation, Vaccines and Testing:**

- Immunisation and Vaccines – Where possible Staff and Pupils eligible or advised to (due to existing medical condition) should ensure their immunisation or vaccines are kept up to date.
- Testing – Where tests are available all staff and pupils showing systems should ensure they are tested in line with Government, Public Health England's guidelines.

### **General Hygiene at school**

The Head Teacher together with the Senior Leadership Team (SLT), Caretaker, Cleaners, Catering Manager will discuss roles and responsibilities:

#### **Teaching Staff**

- Will ensure that pupils follow hygiene guidelines.
- Provide help and guidance when necessary to help young or vulnerable children.
- Will deliver an age appropriate lesson on "The Importance of Good Personal Hygiene" to the pupils. (Personal, Social, Health and Economic [PSHE] lessons).

- Will ensure the pupils are instructed to wear clean uniform/clothes each day.
- Will ensure all soft furnishings and hard to clean items are removed from their classroom.

### **School Caretaker and Cleaners**

- Will ensure that there are adequate supplies of tissues, soap, hot water, paper towels and that bins are emptied regularly.
- Will ensure all hand dryers are deactivated (isolated or the fuse removed)
- Will ensure alcoholic gel is made available to the whole school for more hygienic hand washing
- The Infection Control cleaning routine is implemented for both general daily cleaning and the deep cleaning of the school.
- Rotas are implemented or adapted to ensure the school is cleaned and maintained regularly throughout the day
- Will check cleaning products, handwashing/drying, hand sanitizer and PPE stock levels are maintained.
- Will ensure Material Safety Data Sheets (MSDS) and COSHH Risk Assessments are obtained for all cleaning products used
- Will ensure they use and dilute the cleaning products as per the product information sheet and/or the MSDS and COSHH risk assessment.

### **Catering Manager and Kitchen Staff**

- We will ensure relevant staff have Food Hygiene Certificates or other training in Food Handling.
- Will ensure all stored food that requires refrigeration, covered and dated within a refrigerator, at a temperature of 5°C or below.
- Will ensure food is bought from reputable sources and used by recommended date.
- Will ensure personal hygiene and handwashing is maintained
- Will adjust the kitchen cleaning rota and routine to ensure the kitchen is cleaned thoroughly throughout the day.
- Will clean and disinfect food storage and preparation areas.
- Will ensure a clean uniform is worn each day.
- Will ensure PPE is worn when preparing and serving food (gloves, hair net/hat)

### **Catering and Food Supply**

The Head Teacher together with the School Catering Team will discuss the provision of food and refreshments:

- The provision of food whilst the school is open
- The provision of food for the children entitled to school meals if the school is closed. (School meal vouchers etc)
- Revising the menu to reduce the number of catering staff in the school kitchen at any one time.
- The feasibility of staggering mealtimes to reduce the number of staff and pupils eating in the dining hall at any one time.

### **Medical and PPE**

The Head Teacher together with the Senior Leadership Team (SLT), will discuss the location of an isolation room, First Aid provision within the school and the provision of Personal Protective Equipment (PPE).

### **Isolation room**

During an outbreak of an infectious illness/virus the school will allocate a room which will be used to isolate an unwell member of staff or pupil until medical assistance and/or arrangements are made for the person to be collected and taken home.

### **First Aiders**

- Will ensure an adequate number of First Aiders (Paediatric First Aid, First Aid at Work, Emergency First Aid) are always available.
- Will ensure staff requalification dates have not lapsed
- Will ensure all First Aider receive refresher training to ensure they are:
  - Aware of the risks to themselves and others when approaching a casualty and the risk of cross contamination.
  - Aware of the importance to keep themselves safe (wear PPE, hand washing, CRP safety) etc.
  - Aware of the importance to keep up to date with relevant First Aid Advice.
  - Aware of their own capabilities.

### **Personal Protective Equipment (PPE)**

The school will ensure adequate and appropriate stock levels of PPE is provided for all staff:

- Suitable PPE for cleaners as per MSDS and/or COSHH risk assessments.
- Suitable PPE for cleaners when completing a Deep Clean.
- Suitable PPE for cleaning up bodily waste.
- Suitable PPE for Nappy/Pad Changing.
- Suitable PPE for First Aiders.

#### Types of PPE

- Gloves – Are to be worn to protect your hands
- Face Masks/Coverings – Are worn to protect the spread of a respiratory virus when close contact with another person cannot be avoided.
- Eye Protection or Shields – Are worn when there is a risk of bodily fluids splashing up into your face.
- Aprons – Are worn to protect your clothing from becoming soiled.
- Overshoes – Are worn when cleaning up bodily fluids when walking into the spill cannot be avoided.

## **3. Communication**

The Head Teacher together with the Senior Leadership Team (SLT) will maintain good communication links with Staff, Parents and Pupils.

#### Communication Platforms:

- Face-to-Face and/or E-Learning Training
- Safety Information Handouts
- Risk Assessments
- The school website
- Letter
- Email
- Text

## **4. Continuity of Education Provision**

The Head Teacher together with the Senior Leadership Team (SLT) will activate their **Educational Continuity Plan** in cases where the school has been asked to close or partially close to pupils.

This will take the form of:

- An online course management system

- Remote learning environments using e-platforms
- Web links to which Parents and Pupils can access educational materials from home.
- Training packs which can be picked up or dropped off to pupils who do not have access to the internet or a computer.

## **5. Closure and Reopening of the School**

### **School Closure**

We recognise that closing the school may be necessary in exceptional circumstances in order to control an infection. However, we will strive to remain open unless advised otherwise by Public Health England or Government.

#### **During school closure**

If the school is due to be unoccupied for any length of time the school will ensure:

- The school is inspected weekly to maintain the security of the building
- All statutory checks are completed
- All noncritical business infrastructure electrical appliances are turned off and plugs removed from the sockets,
- All water supplies isolated at the mains and where possible we will drain down all water systems.
- All waste is removed, and external bins are securely placed away from the building.

### **Reopening the School.**

Dependent on the type and severity of the Infection/Epidemic/Pandemic, we will consult with the Local Educational Authority and/or Compliance Education for advice regarding what procedural steps should be implemented and at what time.

#### **Complete reopening no additional procedural steps required.**

- School is Deep Cleaned before reopening.

#### **Partial Reopening with some additional procedural steps.**

- School is Deep Cleaned before reopening
- A partial Health and Safety reopening plan and risk assessment will be created following guidance and advice from external organisations. (Government, Public Health England, Department of Education, Local Educational Authority and Compliance Education)
- Communication links between staff, cleaning/catering staff/contractors', parents/cares and pupils will be put in place.
- The School's Educational Continuity Plan will be implemented to provide schooling to all children regardless of whether they are in school or at home.

#### **Phased Reopening with additional procedural steps**

- School is Deep Cleaned before reopening
- A Phased Health and Safety reopening plan and risk assessment will be created following guidance and advice from external organisations. (Government, Public Health England, Department of Education, Local Educational Authority and Compliance Education)

The Phased Health and Safety Reopening Plan will cover

- Staff Numbers and Eligibility
- Pupil Numbers
- Classroom provision and space (Capacity calculations)
- Communication
- Staff Resources (SLT, Caretakers, Cleaners, Catering Manager, First Aiders, etc).
- Transport

- Layout of Classrooms
- Children who require intimate care.
- Signage
- Entry on and off site
- Access in and out of classrooms
- Staff and Pupils Register
- Access and Egress of Main Entrance (Reception)
- Movement around school (Internal, Entrances and Exits, Toilet Facilities, Refreshments)
- Lunchtime Provision
- Breaktime and Playtime Provision
- Hygiene
- Isolation Room
- First Aid
- Fire Procedures
- Routine daily, weekly, monthly checks.
- Communication links between staff, cleaning/catering staff/contractors', parents/cares and pupils will be put in place.
- The School's Educational Continuity Plan will be implemented to provide schooling to all children regardless of whether they are in school or at home

Reviewed during academic year 2024/25

To be reviewed during academic year 2025/26